

*Always ready. Always by your side.*



# LOGIQ E10 Series

Empowering you to make the difference.

## Diagnose and treat a wide range of musculoskeletal conditions with confidence

### Clinical challenge

Ultrasound imaging is a critical diagnostic test for many musculoskeletal conditions. Clinicians need excellent contrast and detail resolution to get an in-depth understanding of tissue, pathology, blood flow, and inflammation levels.

### GE solution

The LOGIQ™ E10 Series helps you make a difference in the lives of your patients. It provides extraordinary images across the range of musculoskeletal conditions, thanks to the cSound™ Architecture with XDclear™ probes. AI-based workflow tools increase exam efficiency, and advanced specialty tools like 2D Shear Wave Elastography expand your imaging flexibility.

[gehealthcare.com](http://gehealthcare.com)





## Confident diagnosis

The LOGIQ E10 Series empowers clinicians to scan, diagnose, and treat a broad range of conditions. Clinicians can count on high quality images, deep penetration in larger structures, like the shoulder, and finely-detailed visualization in smaller parts, like fingers and wrists.

**Auto-optimized images:** The cSound Imageformer—now with new Advanced Speckle Reduction Imaging (SRI)—continuously delivers images of incredible uniformity from near to far field. There's no need to adjust the focus – the information you need is there, instantly.

**Radiantflow™:** Provides a near-3D look to support visualization of tiny vessels, especially when combined with Micro Vascular Imaging (MVI).

**MVI:** High-definition flow mode helps clinicians clearly see even small vessels in the joints with ease. Further enhanced when used with Radiantflow.

**Choice of high-performance probes:** E-Series and XDclear probes – including the new L6-24-D and ML4-20-D high frequency probes – deliver powerful, high fidelity and wide bandwidth for deep penetration and high resolution. Embedded Volume Navigation sensors in select probes simplify workflow and enhance productivity. Available with Verza™ Needle Guidance, which has five angles for needle visualization.

## Comprehensive tools

The LOGIQ E10 Series provides robust tools that give clinicians a new level of confidence in their diagnostic and treatment decisions.

**B-Steer+:** Enhances needle visualization in real time to improve speed and confidence in needle guidance procedures.

**B-Flow imaging:** This non-Doppler technique enables direct, real-time visualization of blood flow echoes with no vessel wall overlap to obscure details. B-Flow Capture with Reconstruction provides a 3D view of blood vessels, suppressing artifacts and enhancing weak vessel signals.

**Volume Navigation:** The combination of fusion imaging, GPS, and needle tracking help make a real difference in accuracy.

- **Fusion Imaging:** Merge real-time ultrasound with a volume DICOM® dataset (MR or other imaging modality) to help increase precision in image-guided interventional procedures
- **Needle Tip Tracking:** Helps users navigate interventional procedures in plane or out of plane. Available Virtual Tracking tool displays a projected view of the needle during procedures

**Compare Assistant:** Enables clinicians to easily view a prior study – ultrasound, CT or MR – and current images together in real time via a split screen on the monitor, helping to improve confidence and exam efficiency.

**Multi-Modality Query Retrieve:** Enables import of any DICOM data set of previous study for comparison and follow-up.

**2D Shear Wave Elastography:** Enables qualitative and quantitative assessment of tissue elasticity. Now available with a Shear Wave Elastography Quality Map to support accurate measurements.

**Photo Assistant app:** Acquire and send photos of relevant anatomy from the Android™ tablet or phone to provide valuable context for documentation and comparison after a study. Photo Assistant with Compare Assistant allows you to track and document changes between the photo and the sonogram.

**Remote Control app:** Operate a LOGIQ E10 system from an Android tablet or phone that has the LOGIQ Smart App loaded onto it.

## Concise workflow

The LOGIQ E10 Series can help you achieve new levels of workflow efficiency, so you have more time to focus on patients.

**Virtual Convex:** Provides a wide field of view so users can visualize more anatomy in a single scan.

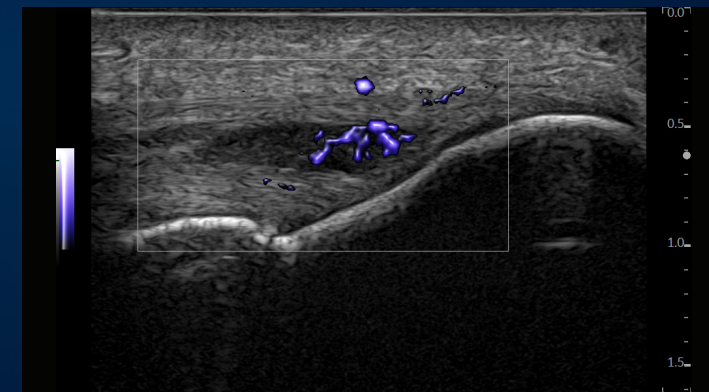
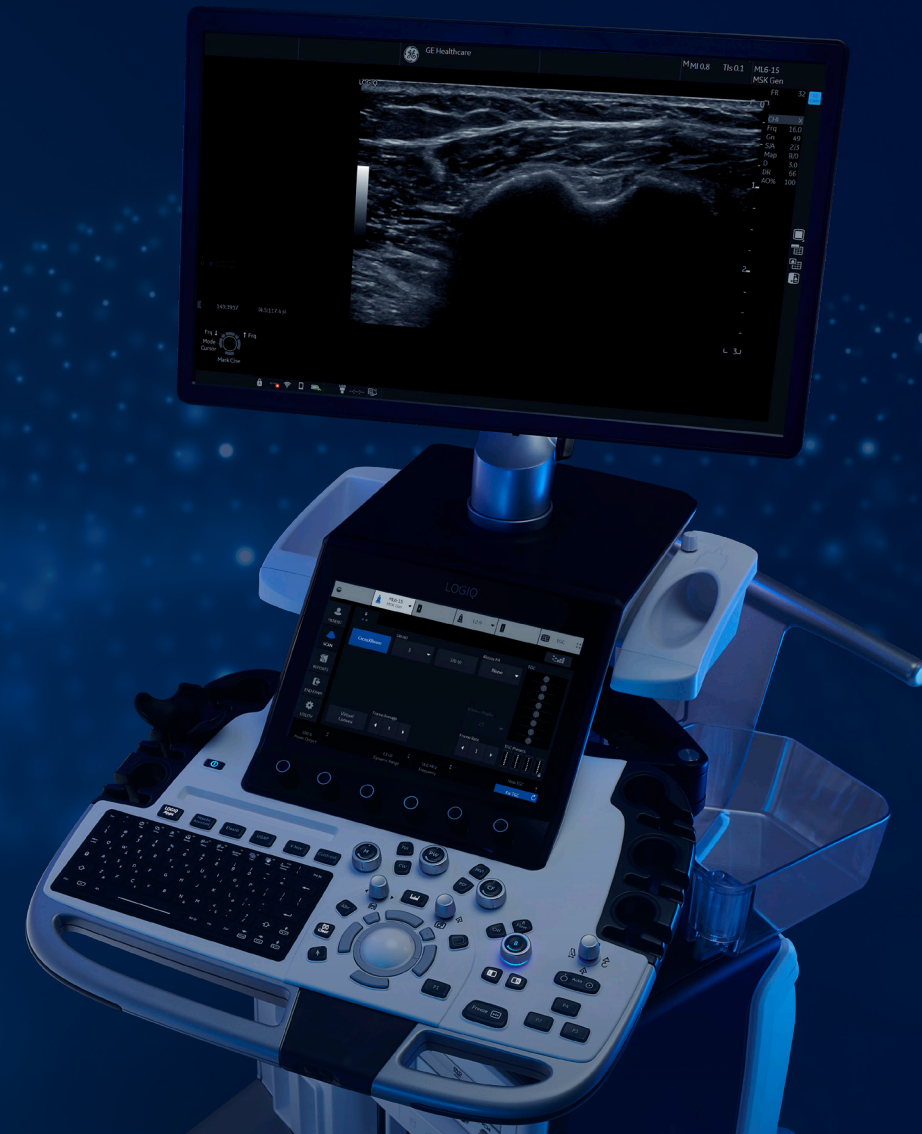
**LOGIQ View:** Constructs an extended image from individual frames, enabling a “virtual sweep” that can help improve visualization of the entire tendon or muscle.

**Raw Data:** Expanded capabilities enable users to apply a wide variety of image processing and quantification after the exam. This allows the operator to extract and reanalyze information without extending exam time.

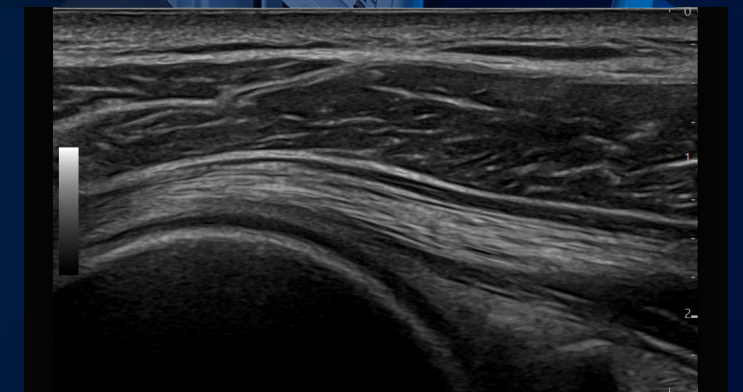
**Flow Quantification:** 2D CFM/PDI quantitative assessment of vascular feeding in a selected ROI. Can help in the assessment of inflammatory disease and vascular feeding of suspicious anatomical areas.

**Scan Assistant:** Provides customizable automation to assist users at each step of an ultrasound exam, helping to reduce keystrokes and exam times.

**Exceptional mobility:** Systems easily fit into crowded suites. Power Assistant battery eliminates the need for re-boot, and you can even scan on battery power. On-board storage ensures supplies are at hand.



MVI with Radiantflow – elbow, L6-24-D



Shoulder – B-Mode, ML4-20-D



## Smart investment

GE Healthcare accelerates innovation with the LOGIQ E10 Series – making it the smart choice for now and in the future. The systems are available with a full suite of robust features and scalable options.

**A to A digital platform:** Stay at the forefront of clinical imaging with our A to A digital platform, specifically engineered so you can add next-generation capabilities in the years ahead.

**Familiar user interface:** The new LOGIQ E10 Series offers greater functionality while maintaining the ease of operation and satisfying user experience that has become a hallmark of LOGIQ interface design. The design features easy to reach controls, adjustable floating keyboard and an articulating monitor.

**SonoDefense:** GE Healthcare's multi-layer approach to cybersecurity helps keep the systems safe and functional in the face of cyberthreats and helps protect patient data from unauthorized access.

**Digital support:** Wide choice of efficiency tools to help users, administrators, and operations staff improve productivity, including remote preset management, performance analytics, software/security updates, live clinical training, and advanced system diagnostics.



© GE, 2021

GE Healthcare reserves the right to make changes in specifications and features shown herein, or discontinue the product described at any time without notice or obligation. Contact your GE Healthcare representative for the most current information. GE, the GE Monogram, LOGIQ, cSound, XDclear, and Radiantflow are trademarks of GE. DICOM is a trademark of National Electrical Manufacturers Association. Verza is a trademark of CIVCO Medical Solutions. Android is a trademark of Google LLC. GE Healthcare, a division of GE. GE Medical Systems, Inc., doing business as GE Healthcare.

December 2021  
JB18483XX  
Global

