



▶ **Enabling Interventional Procedures**



LOGIQ E10 Series

EMPOWERING YOU TO MAKE THE DIFFERENCE

Next-level confidence in needle planning & guidance

CLINICAL CHALLENGE

Clinicians depend on ultrasound to help guide needles and ablation devices, localize anatomy and pathology, and monitor procedures. Accuracy and speed are essential to support confident interventions.

GE SOLUTION

The more efficient your procedures, the more lives you can touch every day. The LOGIQ™ E10 Series with cSound™ Architecture combines versatile XDclear™ probes and the cSound Imageformer to deliver exceptional image quality across a wide range of diagnostic and therapeutic procedures. Available workflow tools, like 2D and 3D/GPS needle guidance, can help reduce procedure time.



Confident diagnosis

The extraordinary image quality of the LOGIQ E10 Series gives clinicians the assurance of detailed visualization when performing biopsies, ablations or treating patients.

Auto-optimized images: The cSound Imageformer automatically and continuously delivers images of high quality across a wide range of clinical scenarios.

Radiantflow™: Provides a near-3D look to support detailed vascular imaging, especially when combined with Micro Vascular Imaging (MVI).

MVI: High-definition flow mode helps clinicians visualize small vessels in masses and organ perfusion. Further enhanced when used with Radiantflow or contrast enhanced ultrasound.

Choice of high-performance probes: E-Series and XDclear probes deliver high fidelity and wide bandwidth for deep penetration and high resolution. Available with Verza™ Needle Guidance, which has five angles for needle visualization for precise placement.

Comprehensive tools

The LOGIQ E10 Series provides robust tools to increase the speed and precision of diagnosis, guidance and treatment.

Volume Navigation: The LOGIQ E10 Series offers advanced capabilities for image-guided procedures, including:

- **Fusion Imaging:** Merge real-time ultrasound with a volume DICOM® dataset (CT, MR, PET/CT, CBCT, SPECT and 3D CEUS) to help increase precision in image-guided interventional procedures
- **Needle Tip Tracking:** Helps users navigate interventional procedures in plane or out of plane. Available Virtual Tracking tool displays a projected view of the needle during procedures
- **2D/3D GPS Tracking:** Visually track position during a scan using GPS-like technology, and mark selected points of interest to save time and enhance confidence
- **3D GPS Markers:** Powerful 3D real-time tool for planning and monitoring ablation

B-Steer+: Enhances needle visualization in real-time to improve speed and confidence in needle guidance procedures.

Contrast Enhanced Ultrasound (CEUS): Provides visualization for pre- and post-ablation assessment of lesion vascularity or residual tumor.

Photo Assistant app: Acquire photos of relevant anatomy via an Android™ smartphone or tablet, and transmit them wirelessly to the ultrasound system for inclusion with the clinical images – providing valuable context for the reviewing physician.

Remote Control app: Operate a LOGIQ E10 system from an Android tablet or phone with the LOGIQ Smart App loaded onto it.



Concise workflow

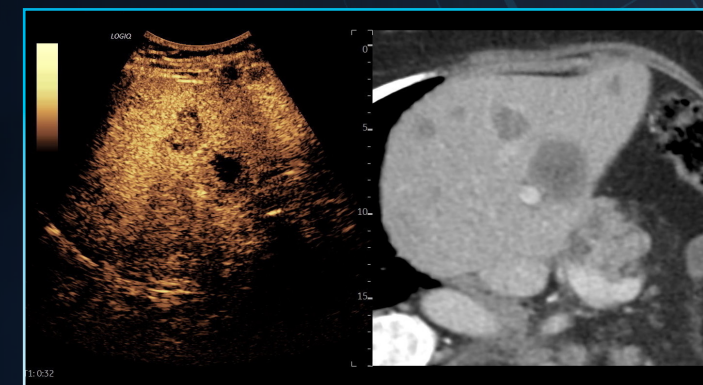
The LOGIQ E10 Series can help you achieve new levels of workflow efficiency, so you have more time to focus on patients.

Auto-registration for Fusion Imaging: Sophisticated navigational tools help increase precision and accuracy of image-guided interventional procedures. The Active Tracker enables one-click auto-registration of CT, MR, CBCT, and 3D CEUS images that enhances accuracy and ease in managing patient motion, breathing and transmitter movements.

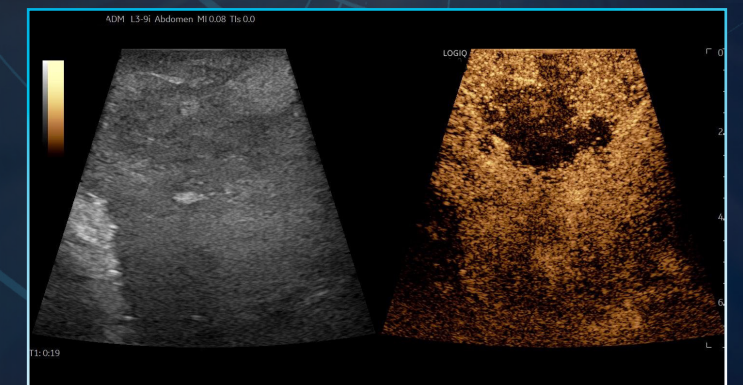
Exam Comparisons: View previous exams side-by-side with real-time images. Easy Access to PACS pushes previous studies to device without interrupting workflow. Multi-Modality Query Retrieve enables import of DICOM data from multiple modalities.

Smart Assistant: Automatically launches the preferred setting and probe when the user selects an exam type, reducing keystrokes and helping to ensure quality imaging.

Exceptional mobility: Systems easily fit into crowded suites. Power Assistant battery eliminates the need for re-boot, and you can even scan on battery power. On-board storage ensures supplies are at hand.



Liver Contrast Enhanced Ultrasound (CEUS) with CT using Volume Navigation, C1-6-D



Liver mass image using CEUS with L3-9i-D



> Smart investment

GE Healthcare accelerates innovation with the LOGIQ E10 Series – making it the smart choice for now and in the future. The systems are available with a full suite of robust features and scalable options.

A to A digital platform: Stay at the forefront of clinical imaging with our A to A digital platform, specifically engineered so you can add next-generation capabilities in the years ahead.

Familiar user interface: The new LOGIQ E10 Series offers greater functionality while maintaining the ease of operation and satisfying user experience that has become a hallmark of LOGIQ interface design.

SonoDefense: GE Healthcare's multi-layer approach to cybersecurity helps keep the systems safe and functional in the face of cyberthreats and helps protect patient data from unauthorized access.

Digital support: Wide choice of efficiency tools to help users, administrators, and operations staff improve productivity, including remote preset management, performance analytics, software/security updates, live clinical training, and advanced system diagnostics.



Product may not be available in all countries and regions. Full product technical specifications are available upon request. Contact a GE Healthcare Representative for more information. Please visit www.gehealthcare.com/promotional-locations.

Data subject to change.

© 2020 General Electric Company – All rights reserved.

GE, the GE Monogram, LOGIQ, XDclear, cSound, and Radiantflow are trademarks of General Electric Company. Android is a trademark of Google LLC. DICOM is a trademark of National Electrical Manufacturers Association. Verza is a trademark of CIVCO Medical Solutions.

Reproduction in any form is forbidden without prior written permission from GE. Nothing in this material should be used to diagnose or treat any disease or condition. Readers must consult a healthcare professional.

To determine whether individual features are standard or optional, consult with your GE Healthcare sales representative.

October 2020 JB00141XX



Powered By
Edison